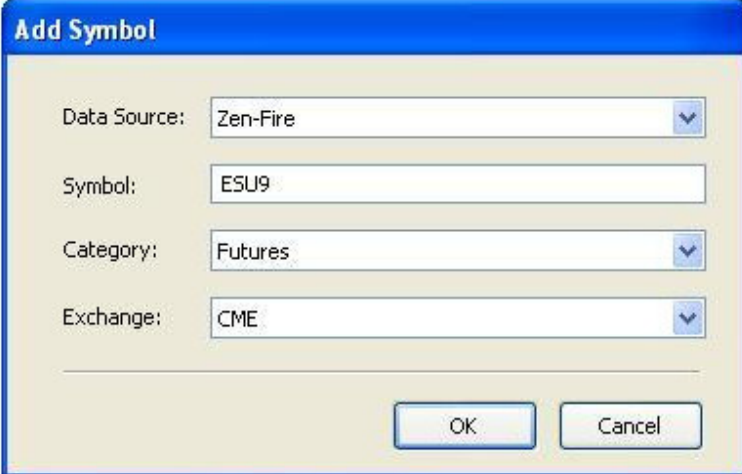


Multicharts Instructions

Creating a chart

Start by opening the multicharts shortcut and the quote manager shortcut created on your desktop.

In the quote manager go to **Symbol> Add Symbol> manually**. You should see the following screen:

A screenshot of a software dialog box titled "Add Symbol". It contains four fields: "Data Source" with a dropdown menu showing "Zen-Fire", "Symbol" with a text box containing "ESU9", "Category" with a dropdown menu showing "Futures", and "Exchange" with a dropdown menu showing "CME". At the bottom right are "OK" and "Cancel" buttons.

Data Source:	Zen-Fire
Symbol:	ESU9
Category:	Futures
Exchange:	CME

OK Cancel

In the Data Source you need to make sure you have Zen-Fire showing. When typing in the symbol you wish to create you need the symbol, contract month, and year. Let's use the Futures Mini S&P for example. The symbol would be ESU9. U for September and 9 for 2009. Now click *OK*.

After clicking *OK* you should see the following screen:

i - Edit Symbol

Future Settings Sessions

Common Information

Data Source: Zen-Fire

Symbol Name: ESU9

Symbol Root: ES

Description:

Additional Information

Margin: 0

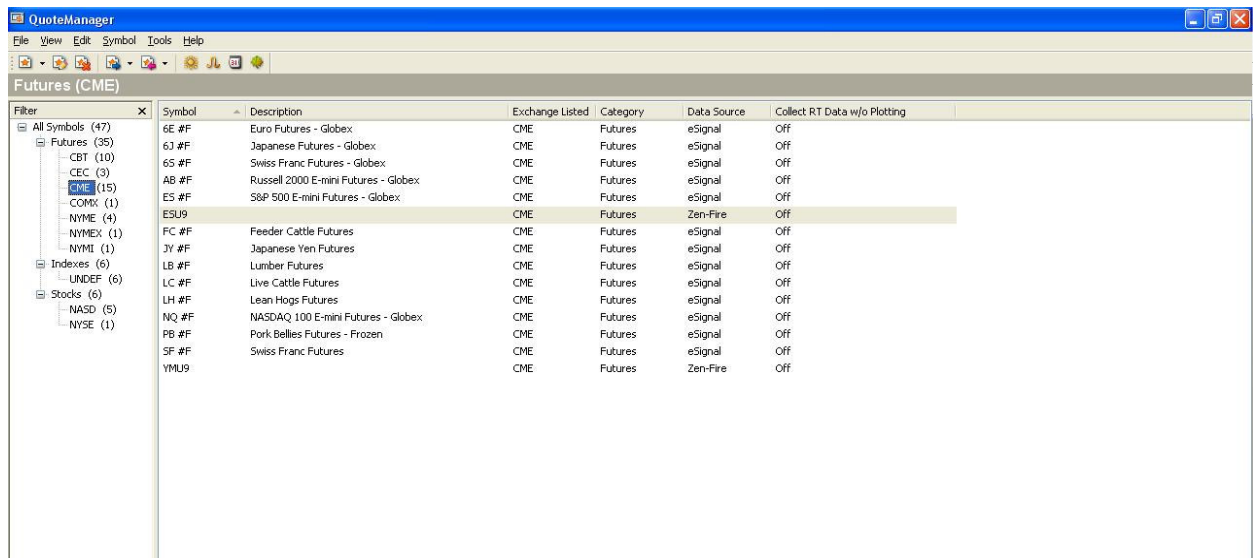
Contract Month: September Expiration Rule:

Contract Year: 2009 Expiration Status: Not expired

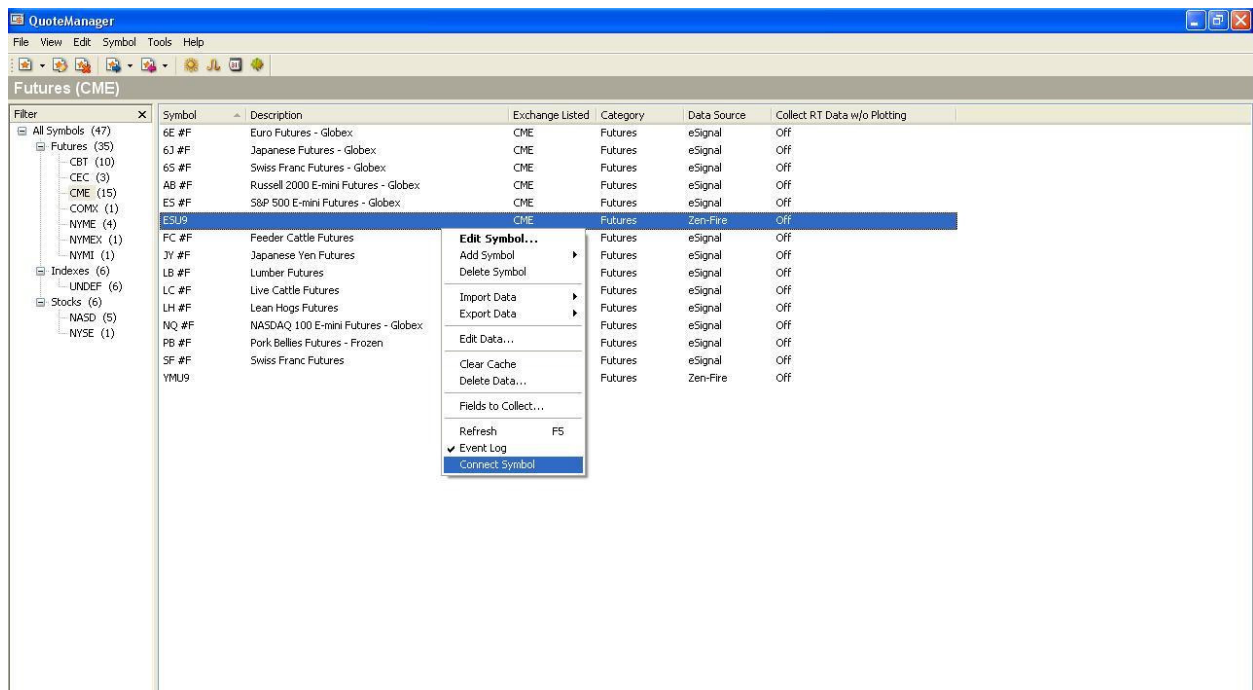
Expiration Date: 9/17/2009

OK Cancel Apply

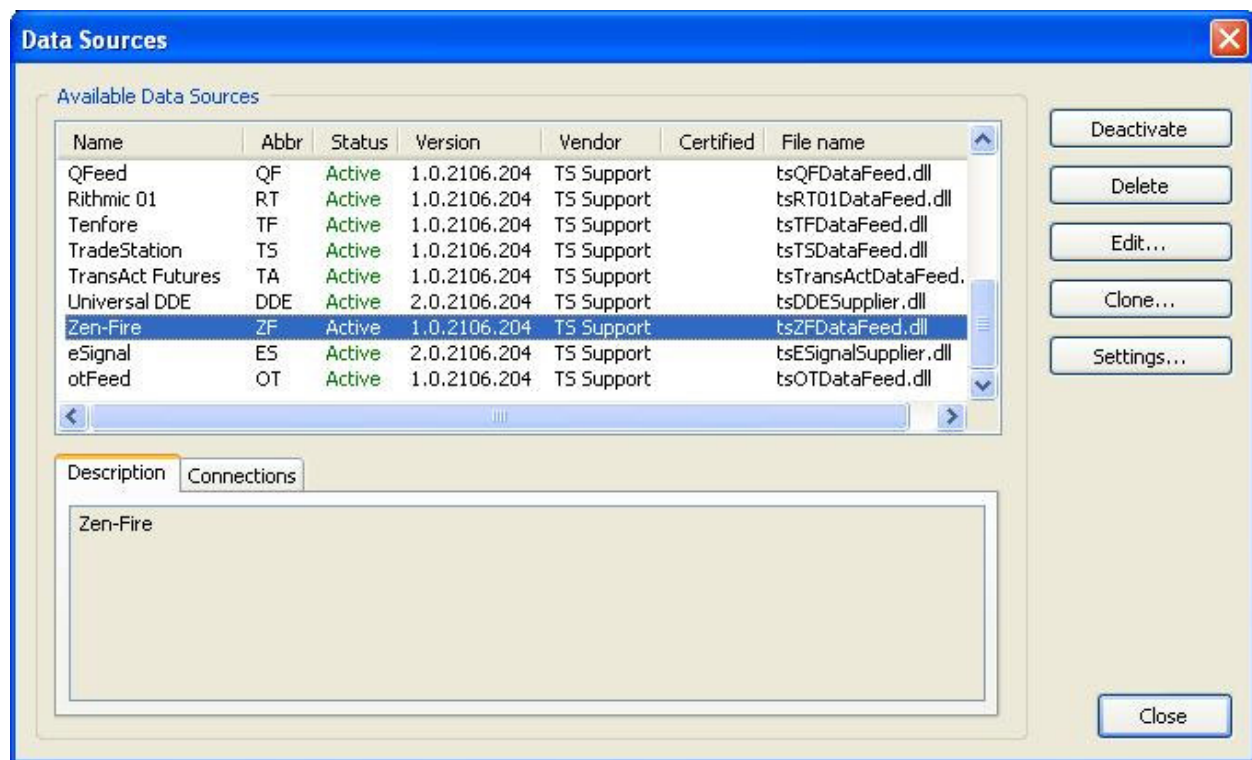
In the new window that opens up you need to type in the symbol root. For ESU9 that would simply be ES. Under contract month you want to scroll down to September, contract year should be set at 2009, and the expiration date will have to be set to whatever the expiration date is. For the ES it's Sept. 17th. Now click *OK* and you will see your newly created ESU9 symbol in the CME symbols on the quote manager. It will look something like this:



Right click the newly created symbol and then click on *connect symbol*.

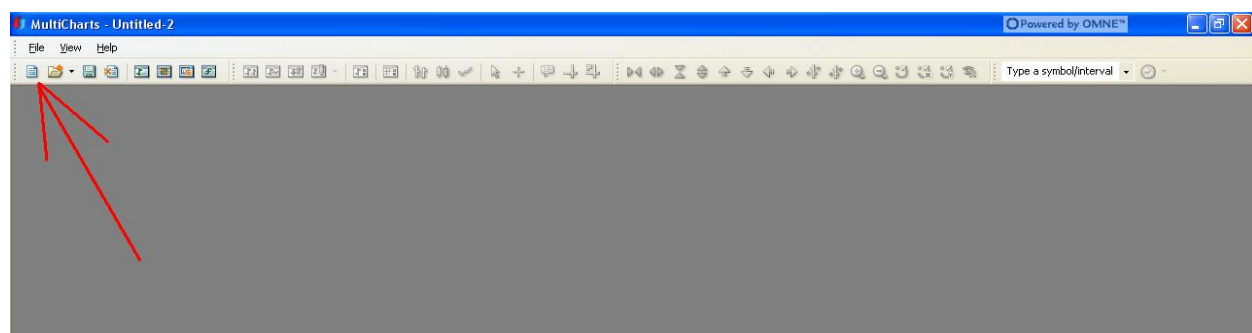


A box should appear asking you for your zen-fire username and password. If you don't see this box it is either behind your current window or you will have to enter it manually. To enter your username and password manually simply click on Tools in the Quote Manager. After clicking on Tools click on Data Sources. You should see the following screen:

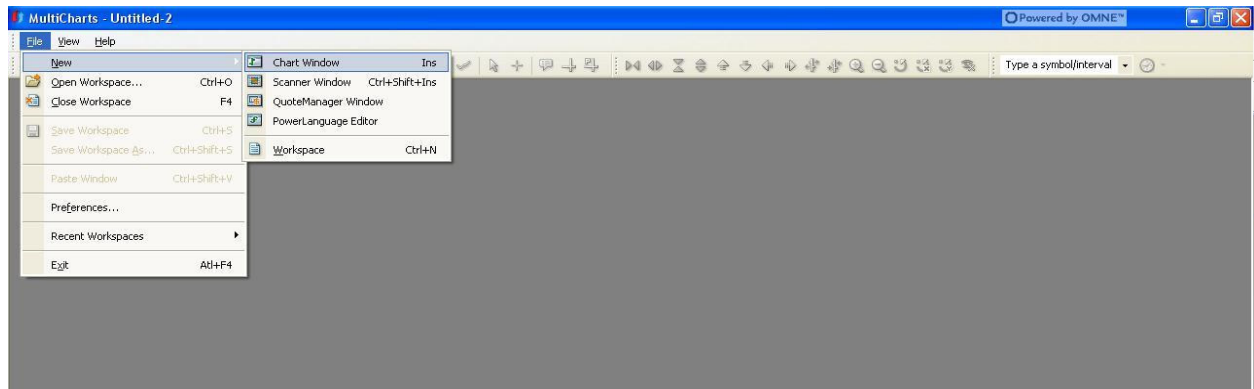


Click on Zen-Fire and then click on Settings. Type in your username and password at the top of the settings window. Then click *OK*. Once you have entered your username and password correctly, your newly created ESU9 symbol should be connected and receiving data.

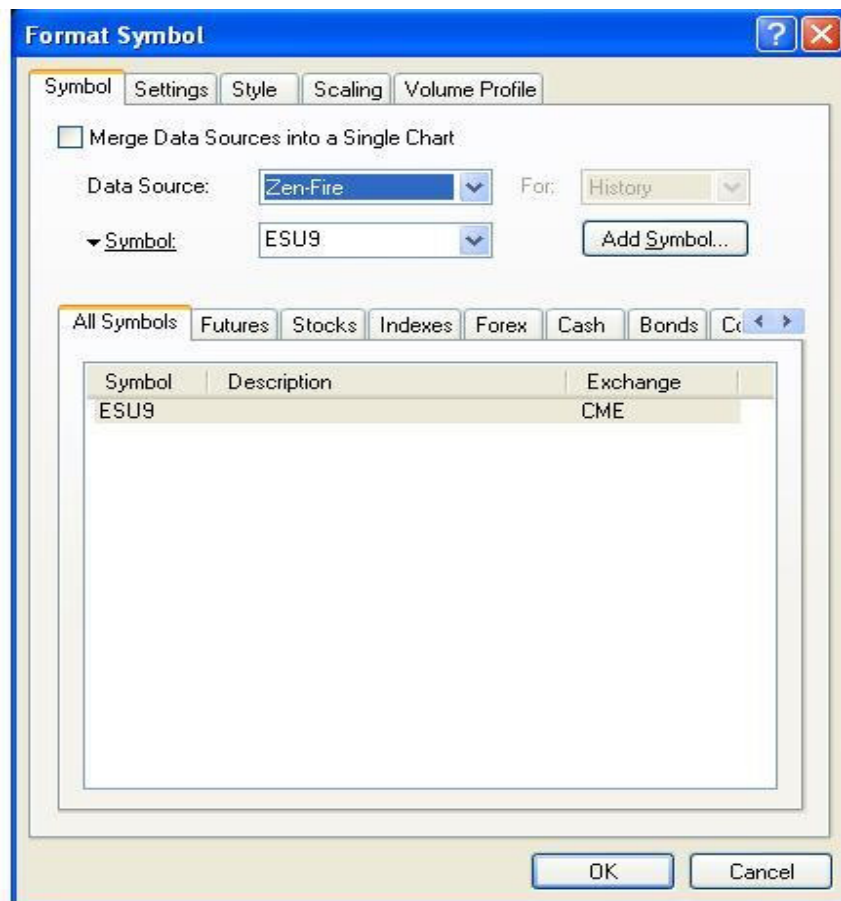
Next you want to go to your Multicharts window. Click on the *New Workspace* button which can be found near the top of the window next to the *open* and *save* buttons. The *New Workspace* button has a red arrow pointing to it in the image below.



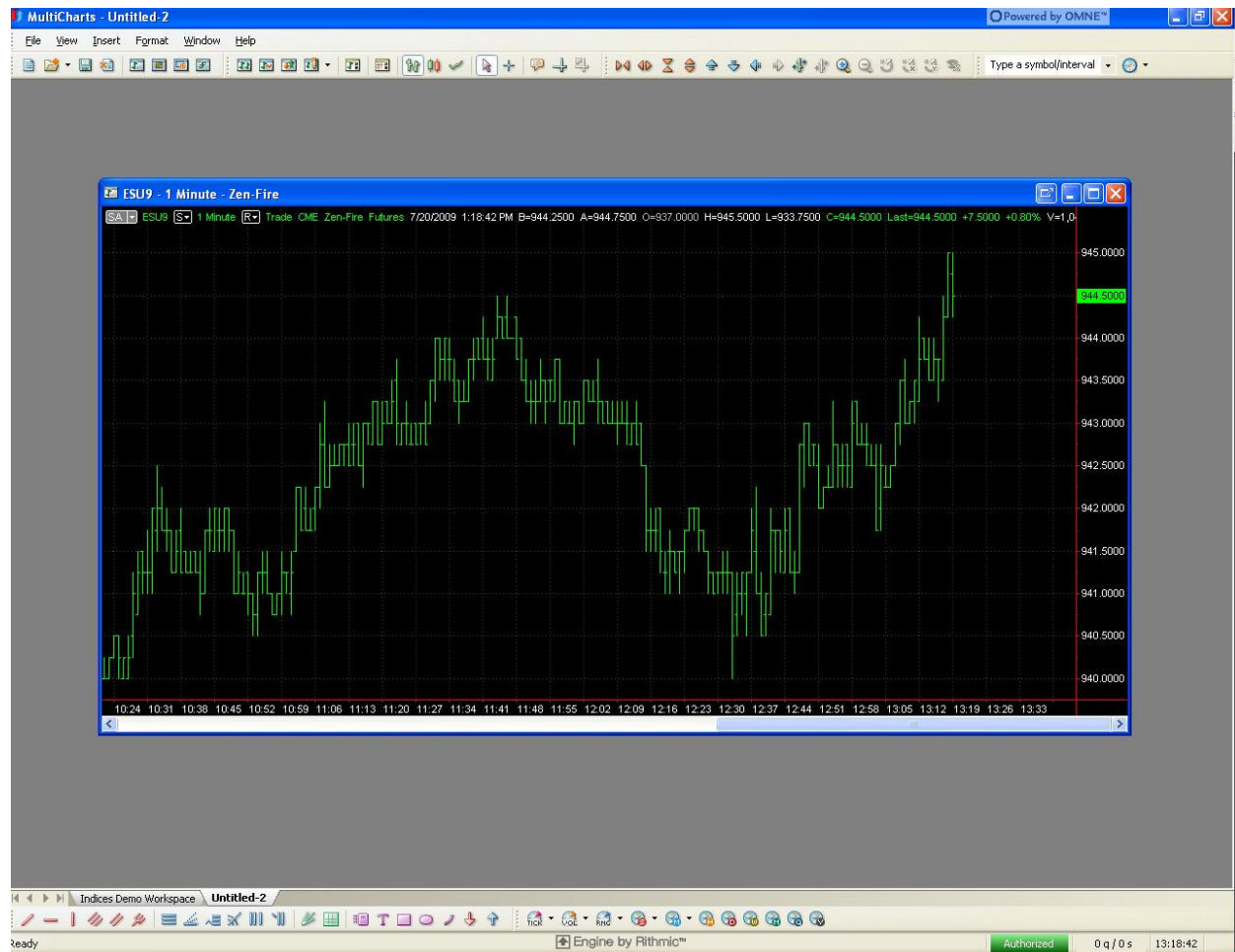
When your new workspace opens up, go to **File> New> Chart Window**.



After clicking *Chart Window* you should see the following *Format Symbol* window appear:



Make sure the data source is set to Zen-Fire. When you scroll down and click on zen-fire, you will see your newly created ESU9 symbol show up. Click on the symbol so it is highlighted and then click *OK* at the bottom of the window. Your ESU9 chart will now appear. It should look something like this:



You can change the format of the chart by right clicking anywhere on the chart and clicking *format window*. Play around with all the different chart options as well. You can change the bars to candlesticks or lines. It's all up to you. There are many buttons on the top and bottom of the multicharts window that allow you to fine-tune each chart to your liking.

